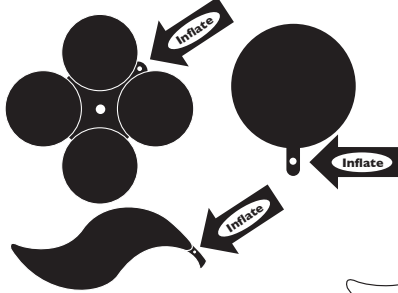


Balloon Column Instructions

Step 1

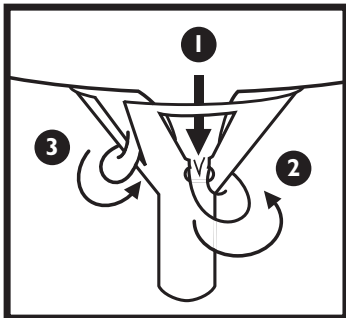
Inflate balloons with air.



Step 2

Secure main balloon to cup by following numbers in diagram below.

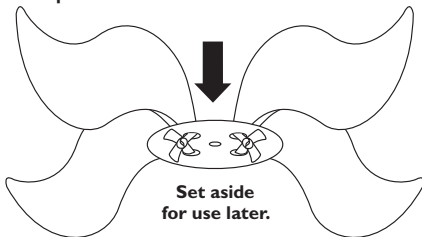
- 1 Insert tail of balloon into top of cup and out the hole on side of cup.
- 2 Wrap tail around cup.
- 3 Tuck tail back inside cup to secure in place.



Set aside for use later.

Step 3

Feed the tails of two of the curved balloons down through holes in disc and tie together. Repeat for other two curved balloons.



Set aside for use later.

How tall do you want your column?
The more MagicArch™ balloons you use the taller the column!

Step 8

See final step below.

Step 7

Retrieve balloon and cup set aside in Step 2. Insert cupped balloon onto top of straw.

Step 6

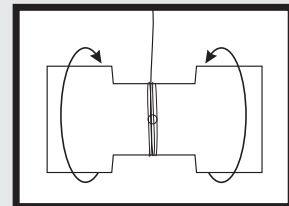
Retrieve balloons and disc set aside in Step 3. Slide entire disc onto straw – through hole in center of disc a couple of inches.

Step 5

After feeding line through MagicArch™ balloons, feed line through straw and tape to side of straw to secure. Be careful not to allow straw to slide back down through center of balloons.

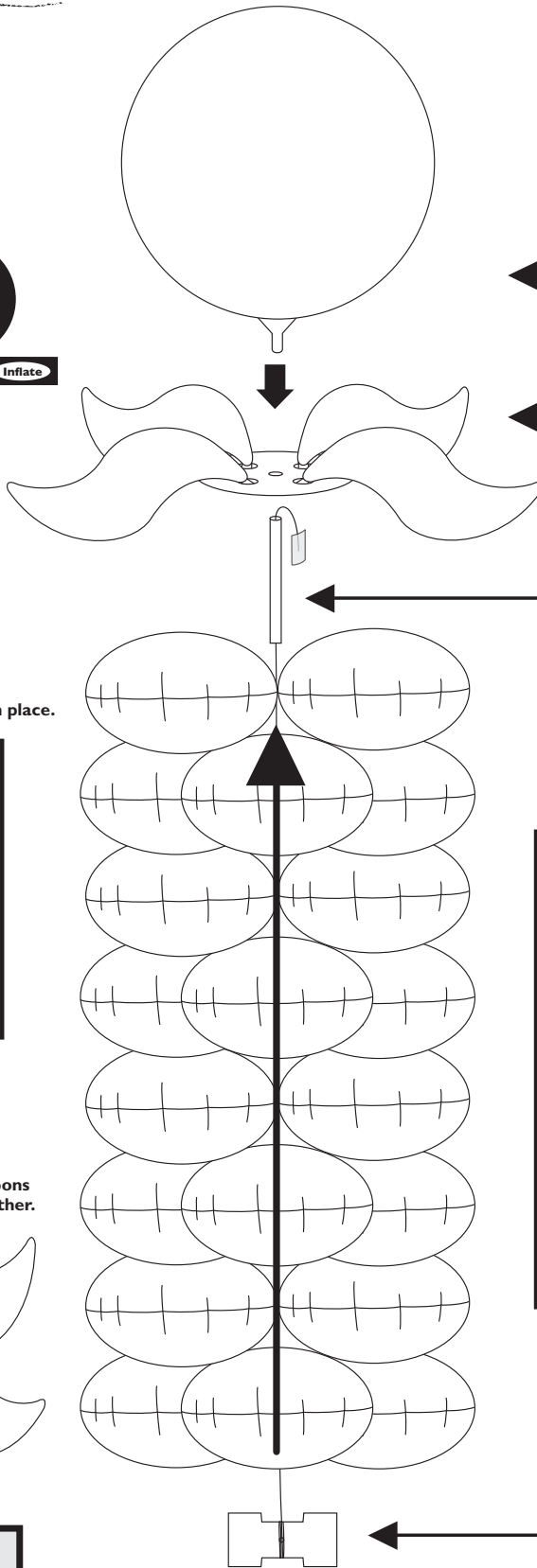
Final Step

Wind cardboard component to remove slack in line. As you wind component you may need to reposition MagicArch™ balloons to fit together correctly. **Caution: Do not overwind. Wind only until MagicArch™ balloons hold firmly together. When finished winding, component should lay flat against bottom MagicArch™ balloon.**



Step 4

Unwind monofilament from cardboard and feed through center hole of each MagicArch™ balloon. Rotate each balloon to fit together as shown.



FM23121